

# 3450 Dr Martin Luther King Jr Blvd

Riviera Beach, FL

±21,320 SF WAREHOUSE/OFFICE ON ±3.38 ACRES



## Contact Us

### PROPERTY HIGHLIGHTS

- + ±21,320 SF Warehouse/Office on ±3.38 Acres
- + ±770 SF of office space
- + Grade level loading
- + 20' clear height
- + Heavy 3 Phase power
- + Rail access
- + Zoned Industrial (I), Riviera Beach
- + Parcel ID - 56-43-42-31-00-000-5090
- + Built in 1975
- + Fully fenced and secure site ideal for outside storage of equipment, materials or vehicles

#### KIRK NELSON

Executive Vice President  
+1 561 716 9936  
kirk.nelson@cbre.com

#### ROBERT C. SMITH

Executive Vice President  
+1 561 707 5558  
robert.c.smith@cbre.com

### Rental Rate - Call for Details

Estimated Real Estate Taxes - \$70,801.79

Estimated Building Insurance - \$42,927.54



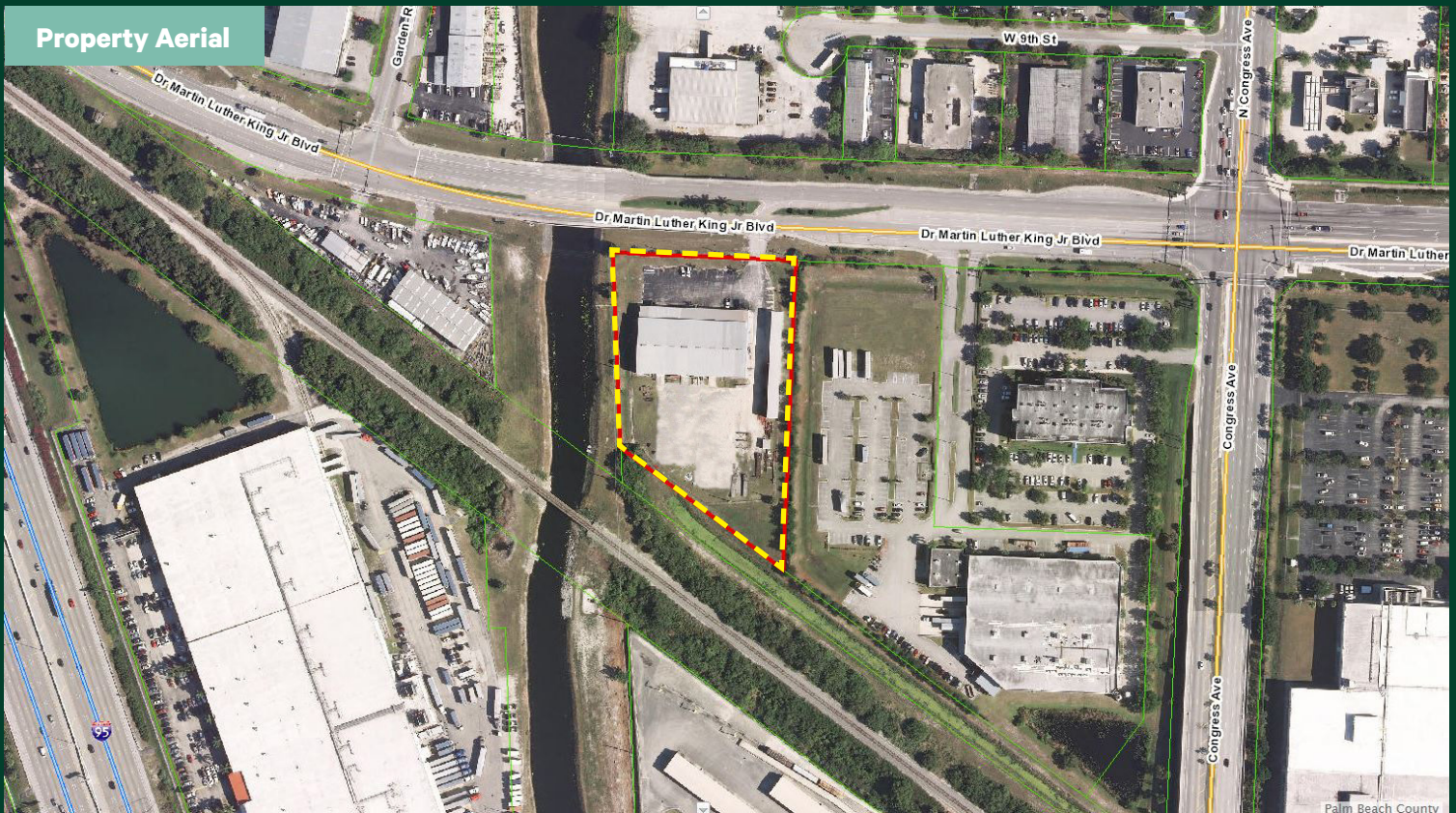
±21,320 SF Warehouse/Office on ±3.38 Acres  
3450 Dr Martin Luther King Jr Blvd | Riviera Beach, FL

For Lease

Additional Photos



Property Aerial



## Contact Us

**KIRK NELSON**  
Executive Vice President  
+1 561 716 9936  
kirk.nelson@cbre.com

**ROBERT C. SMITH**  
Executive Vice President  
+1 561 707 5558  
robert.c.smith@cbre.com

© 2025 CBRE, Inc. All rights reserved. This information has been obtained from sources believed reliable, but has not been verified for accuracy or completeness. You should conduct a careful, independent investigation of the property and verify all information. Any reliance on this information is solely at your own risk. CBRE and the CBRE logo are service marks of CBRE, Inc. All other marks displayed on this document are the property of their respective owners, and the use of such logos does not imply any affiliation with or endorsement of CBRE. Photos herein are the property of their respective owners. Use of these images without the express written consent of the owner is prohibited.